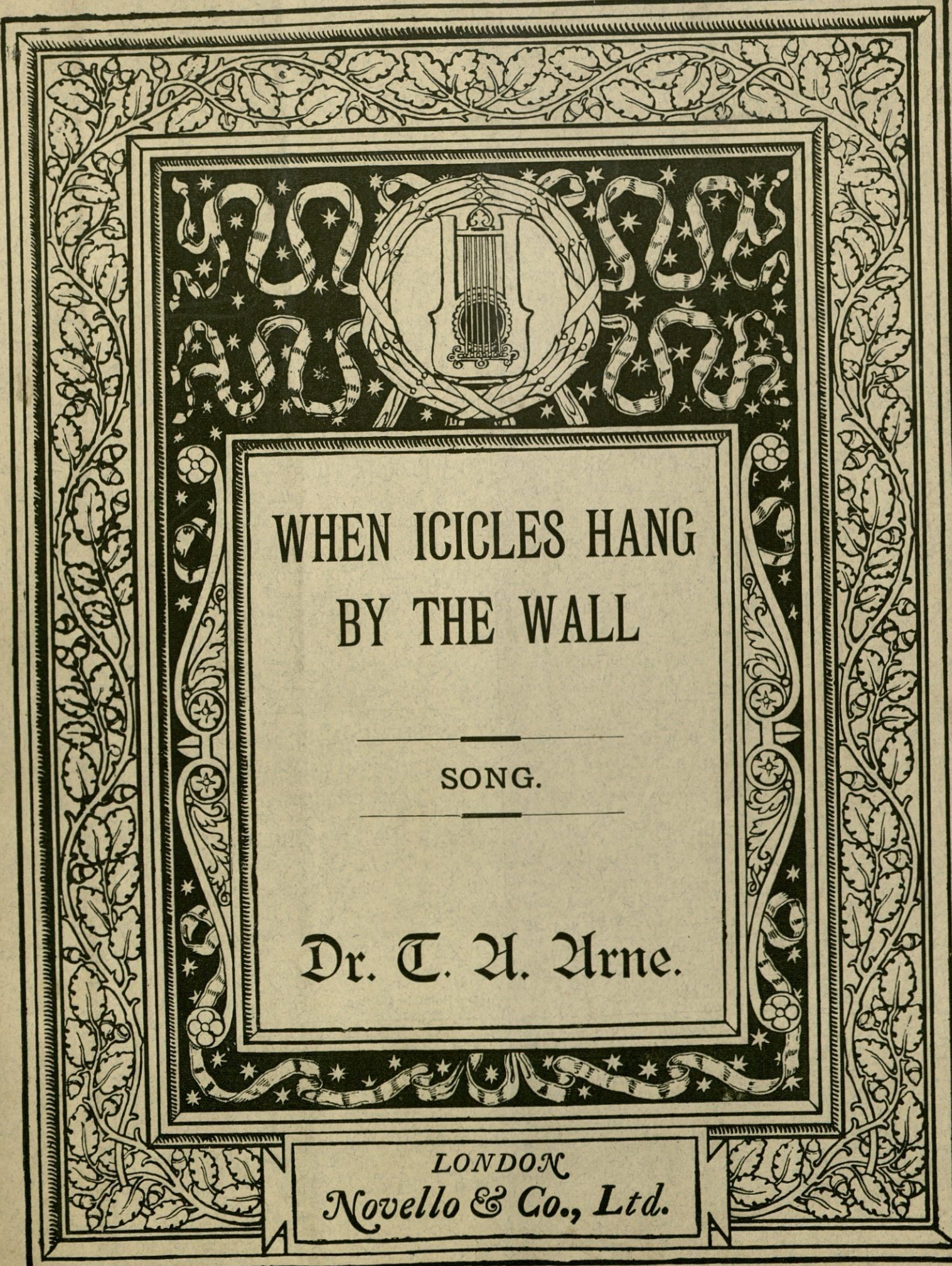


930



WHEN ICICLES HANG
BY THE WALL

SONG.

Dr. T. A. Arne.

LONDON
Novello & Co., Ltd.

Price 1/6 net.

NOVELLO'S NEW AND POPULAR SONGS

PUBLISHED IN KEYS TO SUIT THE VOICES SPECIFIED BELOW.

PRICE TWO SHILLINGS EACH, NET.

PLEADING.

By EDWARD ELGAR.

Suitable for All Voices.

Sung by Miss CLARA BUTTERWORTH and
Mr. KENNERLEY RUMFORD.

ROLLING DOWN TO RIO.

By EDWARD GERMAN.

Suitable for Baritones or Basses.

Sung by Mr. KENNERLEY RUMFORD and
Mr. HARRY DEARTH.

REMEMBRANCE AND REGRET.

By ERNEST NEWTON.

Suitable for All Voices.

Sung by Miss VIOLET LUDLOW and
Mr. JOSEPH REED.

TO WELCOME YOU.

By A. GORING-THOMAS.

Suitable for Sopranos or Contraltos.

Sung by Miss ADA FORREST and
Madame ADA CROSSLEY.

ELÉANORE.

By COLERIDGE-TAYLOR.

Suitable for Tenors or Baritones.

Sung by Mr. JOHN COATES and
Mr. DALTON BAKER.

IT WAS A LOVER AND HIS LASS.

By FREDERIC AUSTIN.

Suitable for All Voices.

Sung by Miss PERCEVAL ALLEN.

TWO SONGS.

By NOEL JOHNSON.

a. "TAKE THOU THIS ROSE."

b. "AFFINITY."

Suitable for All Voices.

YOUR DEAR HEART.

By WILTON KING.

Suitable for All Voices.

Sung by Mr. CHARLES COPLAND.

SONGS OF FRIENDSHIP.

By REGINALD SOMERVILLE.

Suitable for All Voices.

Sung by THE COMPOSER.

TWELVE DAYS OF CHRISTMAS.

By FREDERIC AUSTIN.

Suitable for Baritones.

Sung by Mr. KENNERLEY RUMFORD.

MY HEART A-DREAM.

By A. W. KETÈLBEY.

Suitable for All Voices.

THREE FISHERS.

By J. M. CAPEL.

Suitable for Sopranos or Contraltos.

THE HEART'S AWAKENING.

By A. W. KETÈLBEY.

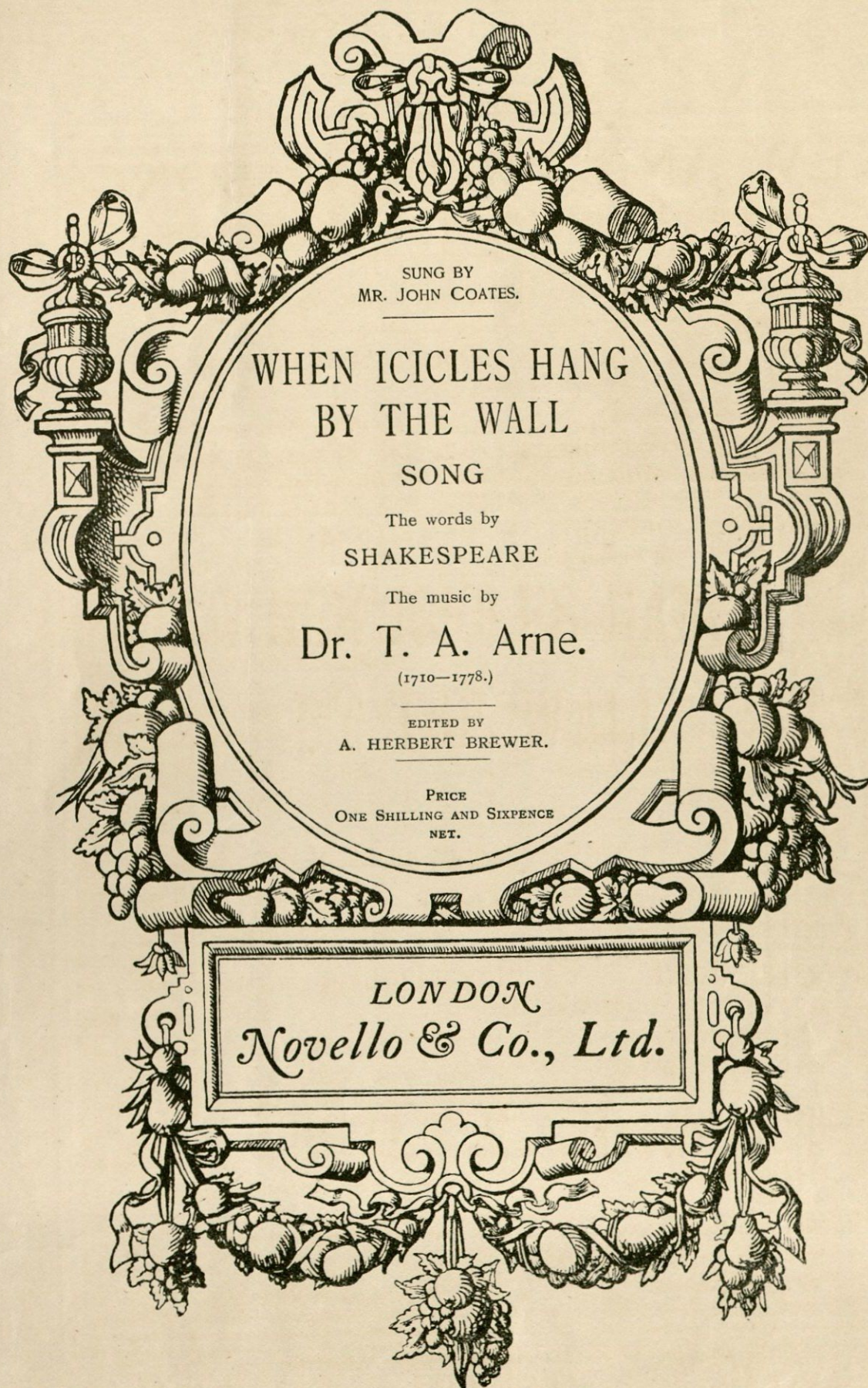
Suitable for All Voices.

FAR FROM MY HEAVENLY HOME.

By E. J. MARGETSON.

Suitable for All Voices.

LONDON: NOVELLO AND COMPANY, LIMITED.



SUNG BY
MR. JOHN COATES.

WHEN ICICLES HANG
BY THE WALL
SONG

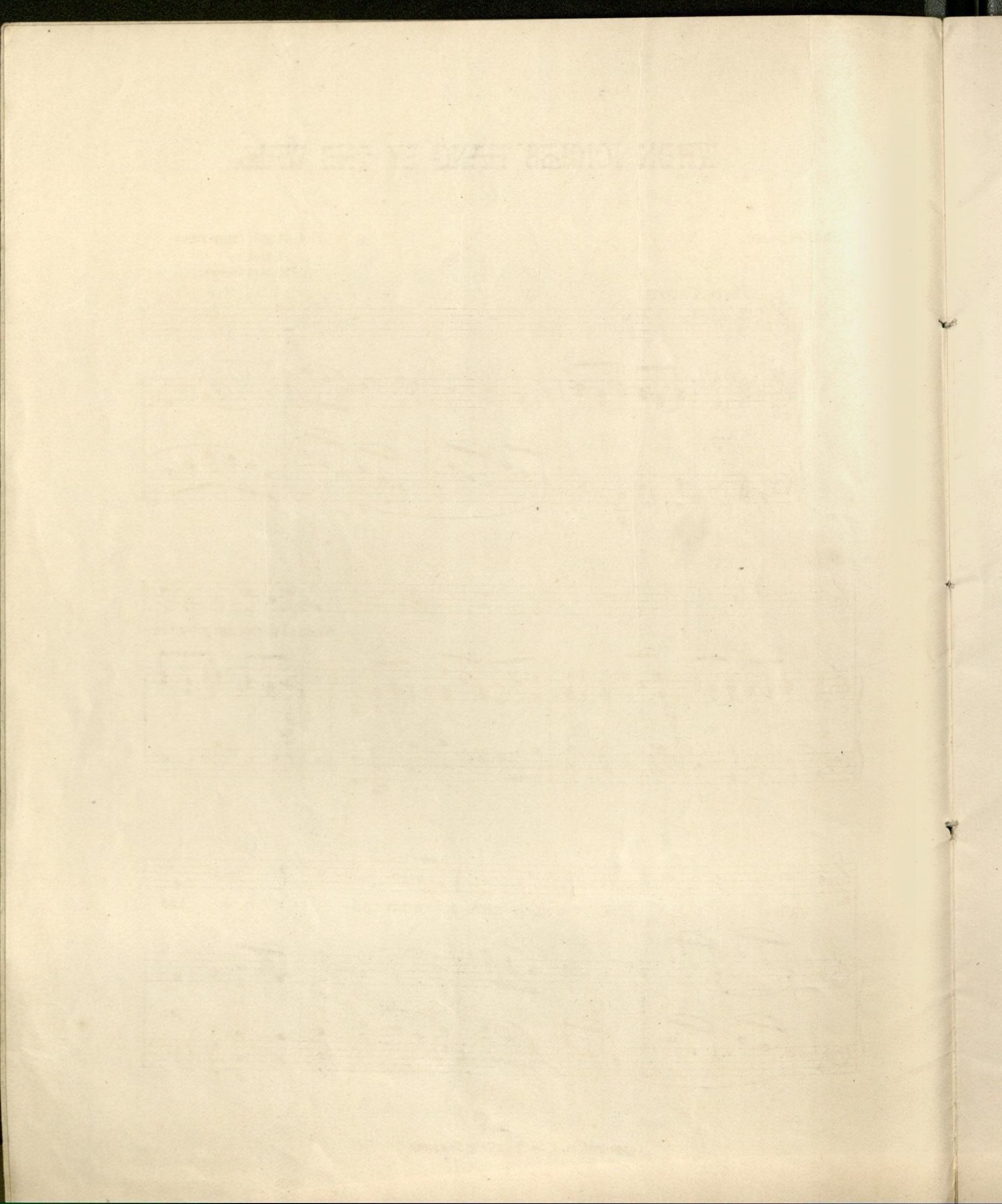
The words by
SHAKESPEARE

The music by
Dr. T. A. Arne.
(1710—1778.)

EDITED BY
A. HERBERT BREWER.

PRICE
ONE SHILLING AND SIXPENCE
NET.

LONDON
Novello & Co., Ltd.



WHEN ICICLES HANG BY THE WALL.

Shakespeare.

T. A. Arne. (1710-1778)

Edited by
A. Herbert Brewer.

Poco Allegro.

mp

tr

cresc.

f

P

When i-ci-cles hang by the

wall, And Dick the shep-herd blows his nail, And

f

P

Tom bears logs in - to the hall, And milk comes fro - zen home in pail,

When blood is nipp'd, and ways be foul, Then

night - ly sings the star - ing owl, then night - ly sings the

star - ing owl, Tu-whit, tu-whoo, tu-whoo, a

a piacere *Tempo I^o* *mf*

pp *imitando la voce* *Tempo I^o* *p*

cresc.
 mer-ry, mer-ry note, a mer-ry, mer-ry note, While

grea - sy Joan, grea - sy Joan, while grea - sy Joan doth keel the pot.

Tempo I?
 When loud the wind doth blow, And

Tempo I?
accel.

cough - ing drowns the Par - son's saw, And birds sit brood - ing

in the snow, And Marian's nose looks red and raw,

f

When roast-ed crabs hiss in the bowl, Then night-ly sings the

P

star - ing owl, then night - ly sings the star - ing owl, Tu-

mf rit. a piacere

mf mp rit.

- whit, tu-who, — tu-who, — a mer-ry, mer-ry

Tempo I^o

pp

imitando la voce

P

note, a mer-ry, mer-ry note, While grea - sy Joan,

cresc.

cresc.

grea-sy Joan, while grea-sy Joan doth keel the pot.

f accel. al fine

Songs by S. Coleridge-Taylor.

SIX AMERICAN LYRICS.

- | | |
|--|--|
| 1. O THOU, MINE OTHER, STRONGER
PART <i>Ella Wheeler Wilcox.</i> | 4. THE DARK EYE HAS LEFT US <i>Whittier.</i> |
| 2. O PRAISE ME NOT <i>Ella Wheeler Wilcox.</i> | 5. O SHIP, THAT SAILEST SLOWLY ON
<i>Ella Wheeler Wilcox.</i> |
| 3. HER LOVE <i>Ella Wheeler Wilcox.</i> | 6. BEAT, BEAT, DRUMS! <i>Walt Whitman.</i> |

FOR CONTRALTO OR BARITONE.

PRICE TWO SHILLINGS EACH.

THE SOUL'S EXPRESSION (*Elizabeth Barrett Browning*). (FOUR SONNETS)

- | | |
|-------------------------------|-----------------|
| No. 1. THE SOUL'S EXPRESSION. | No. 3. GRIEF. |
| No. 2. TEARS. | No. 4. COMFORT. |

FOR CONTRALTO.

PRICE TWO SHILLINGS AND SIXPENCE, COMPLETE.

YOU'LL LOVE ME YET (*Robert Browning*).

- | | |
|-----------------------------------|------------------------------|
| No. 1. FOR CONTRALTO OR BARITONE. | No. 2. FOR SOPRANO OR TENOR. |
|-----------------------------------|------------------------------|

CANOE SONG (*Isabella Crawford*).

- | | |
|-----------------------------------|------------------------------|
| No. 1. FOR CONTRALTO OR BARITONE. | No. 2. FOR SOPRANO OR TENOR. |
|-----------------------------------|------------------------------|

A BLOOD-RED RING HUNG ROUND THE MOON (*Barry Dane*). FOR CONTRALTO.

SWEET EVENINGS COME AND GO, LOVE (*George Eliot*).

- | | |
|-----------------------------------|------------------------------|
| No. 1. FOR CONTRALTO OR BARITONE. | No. 2. FOR SOPRANO OR TENOR. |
|-----------------------------------|------------------------------|

AS THE MOON'S SOFT SPLENDOUR (*Shelley*). FOR CONTRALTO OR BARITONE.

ELÈANORE (*Eric Mackay*).

- | | |
|-------------------|----------------------|
| No. 1. FOR TENOR. | No. 2. FOR BARITONE. |
|-------------------|----------------------|

GREAT IS HE WHO FUSED THE MIGHT (*Stephen Phillips*). (DRINKING SONG FROM "ULYSSES") FOR TENOR.

O SET THE SAILS (*Stephen Phillips*). (FROM "ULYSSES") FOR TENOR.

ONAWAY! AWAKE, BELOVED (*Longfellow*). (FROM "HIAWATHA'S WEDDING-FEAST") FOR TENOR.

SPRING HAD COME (*Longfellow*). (FROM "HIAWATHA'S DEPARTURE") FOR SOPRANO.

HIAWATHA'S VISION (*Longfellow*). (FROM "HIAWATHA'S DEPARTURE") FOR BARITONE.

PRICE TWO SHILLINGS EACH.

LONDON: NOVELLO AND COMPANY, LIMITED.

NEW YORK: THE H. W. GRAY CO., SOLE AGENTS FOR THE U.S.A.

NOVELLO'S NEW AND POPULAR SONGS

PUBLISHED IN KEYS TO SUIT THE VOICES SPECIFIED BELOW.

PRICE TWO SHILLINGS EACH, NET.

SONS OF THE SEA.

By COLERIDGE-TAYLOR.

Suitable for Baritones.

Sung by Mr. KENNERLEY RUMFORD.

THE SECRET OF LOVE.

By FELIX CORBETT.

Duet for Contralto and Baritone.

Sung by Madame CLARA BUTT and
Mr. KENNERLEY RUMFORD.

DOWN CHELSEA WAY.

By HENRY COATES.

Suitable for Baritones or Basses.

Sung by Mr. ROBERT RADFORD.

SILENT LOVE.

By FRANK LAMBERT.

Suitable for All Voices.

Sung by Mr. FREDERIC WILLIAMS.

MY SUSAN.

By FREDERIC AUSTIN.

Suitable for Tenors or Baritones.

PROUD MAISIE.

By FREDERIC AUSTIN.

Suitable for All Voices.

SIGH NO MORE, LADIES.

By FREDERIC AUSTIN.

Suitable for Tenors or Baritones.

ZUMMERZETZHIRE. (Old Song.)

Arranged by ERNEST NEWTON.

Suitable for Baritones or Basses.

Sung by Mr. CHARLES TREE and
Mr. ALEXANDER TUCKER.

LOVE IS FOR EVER.

By ERNEST NEWTON.

Suitable for Tenors or Baritones.

Sung by Mr. HENRY BEAUMONT and
Mr. CYNLAIS GIBBS.

THE PURITAN MAID.

By PERCY FLETCHER.

Suitable for All Voices.

Sung by Miss ALICE BATEMAN.

THE SONGSTERS' AWAKENING.

(Vocal Waltz.) By PERCY FLETCHER.

Suitable for Sopranos.

Sung by Miss ALICE BATEMAN.

TO THE RIVER. (Barcarolle.)

By PERCY FLETCHER.

Suitable for All Voices.

SING, BRITAIN'S SONS.

By CHARLES HARRISS.

Suitable for Baritones.

COULD AUGHT OF SONG.

By J. D. DAVIS.

Suitable for Tenors or Baritones.

LONDON: NOVELLO AND COMPANY, LIMITED.